

FlexMixer™ Multi-Gas Blending System by KIN-TEK Analytical, Inc.



Features

- Automated Gas Blending of Balance Gas and up to 3 Component Gases.
- 100+ preloaded gas configurations available; 20 user defined gas blends.
- Profile and Manual control modes.
- Create, control, and measure custom gas blends.
- Perform multi-point calibration of analyzers, sensors, detectors.
- Dilute existing cylinder sources.
- User friendly software for a simplified solution with integrated safety shut off.
- Portability between labs or facilities with small footprint.

Applications

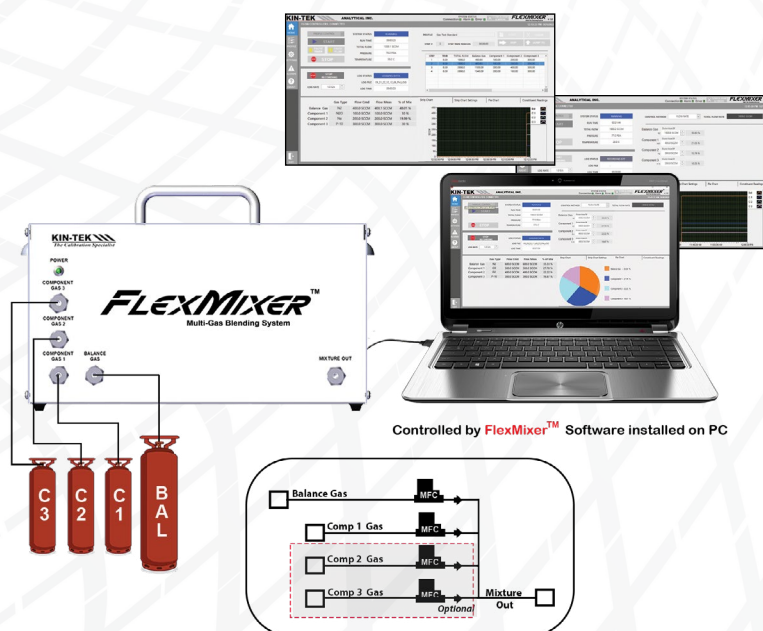
- **Calibration:** Multipoint and single point calibration of Gas Analyzers, Detectors, and Sensors
- **Exposure:** Gaseous atmospheres can be dynamically created for exposure studies and varied for different concentrations.
- **Static blend:** Create custom gas mixtures for storage or immediate use.

FlexMixer™

KIN-TEK has been a leader in supplying gas calibration equipment for over 50 years. Expanding on many years of knowledge and experience, KIN-TEK introduces the FlexMixer™ Multi-Gas Blending/Diluting System that mixes or dilutes up to 4 separate gas feeds (or cylinder sources) to one Span Gas output channel. Controlled by included software installed on the user PC, the FlexMixer™ is an economical, lightweight, functional solution for a broad range of applications. The FlexMixer™ generates multi-point gas standards for analyzer calibration, fills test volumes for research purposes, or dilutes select gas sources. The FlexMixer™ can be customized to accommodate different types of gas input sources and/or premixed cylinders. Users easily create percent level (%) concentrations or trace concentration gas mixtures for storage or calibration.

Operation

The KIN-TEK FlexMixer™ utilizes dedicated input channels to blend a balance gas source with up to 3 input component gas sources such as direct feeds or dedicated cylinders. The FlexMixer™ works via dedicated FlexMixer™ software with two control modes: Profile or Manual. Profile Control enables automated operation by setting timed run sequences, while Manual Control enables point selected settings. Profiles of complex gas blending/diluting may be created, saved, and executed to meet unique application requirements. All data can be recorded and logged to a local file. Internal Mass Flow Controllers (MFCs) are calibrated and certified for accuracy and NIST traceability. The system comes with a 1-year Limited Warranty, power cord, FlexMixer™ Software, USB-A to USB-B cable, Certificates of Calibration, and digital copy of the User's Manual.



Specifications

FLOW RANGES

- Balance gas flow rate: 0 – 5 sLpm (other ranges available)
- Component gas flow rate: 0 – 0.5 sLpm (other ranges available)
- Accuracy: +/- 0.6% of reading or +/- 0.1% full scale, whichever is greater
- Repeatability: +/- 0.1% of reading +0.02% of full scale

CREATE CUSTOM GAS BLENDS

- 100+ preloaded gas configurations available
- Save up to 20 user defined blends, each with up to 5 gases

USER-FRIENDLY SOFTWARE

- Automatic logging of resultant data for analysis at your convenience
- Program timed automated sequences using Profile Control and set user defined points with Manual Control:
 - o **Concentration method:** set your target concentration (ppm or %) with total flow and it auto-calculates and controls output flows
 - o **Flow method:** set your desired flow rates and the FlexMixer™ calculates the resulting concentrations

SAFETY SHUT-OFF

- Loss of communication with FlexMixer™ software terminates all flows

COMPUTER INTERFACE

- USB-A to USB-B cable included
- Requires user-supplied PC

ENVIRONMENTAL CONDITIONS:

- Operating Temperature: -10 °C to +60 °C

WARM-UP TIME:

- < 2 MINUTES

OPERATING PRESSURES AT INLETS:

- Recommended: 50 PSIG
- Minimum: 30 PSIG

PROCESS CONNECTION:

- Inlet – ¼ in Stainless Steel compression fittings
- Outlet – ¼ in Teflon® compression fittings

OPTIONS:

- Additional MFC's (expandable, up to 10 MFCs)
- Comes calibrated to STP (0°, 760 mm Hg reference) can be set to 25 °C reference.
- Standard Tubing is Teflon® (Stainless Steel or special options available)

POWER REQUIREMENTS:

- 100 to 240 VAC, 2A, 50-60 Hz

DIMENSIONS (w x h x d):

11.5-inches (29.84 cm) x 6.25 inches (15.87 cm) x 9.63 inches (24.46 cm)

All dimensions are approximate

WEIGHT:

13.5 lb (6.1 kg) for stand-alone module with portable carrying case

All weights are approximate

KIN-TEK Analytical, Inc.
504 Laurel St., La Marque, Tx 77568 USA
Ph. 409-938-3627 • 1-800-326-3627
Fax: 409-938-3710
sales@kin-tek.com



The KIN-TEK Analytical, Inc. Quality Management System is registered by Intertek as conforming to the requirements of ISO 9001:2015.

For more information: <https://kin-tek.com/kin-tek-quality>

NIST is a trademark of National Institute of Standards and Technology
Teflon® is a registered trademark of Chemours